

Chapter V Fitting and Checking

Motor Drive on the Camera

~ 1. Fitting to the camera

- (1) First check if the "Q - Assembly" (a part provided with a tripod socket) in the camera is the one which operates the Motor Drive or not. If it is not, replace it with correct one. The bottom plate #243 can be identified by two holes as shown in Fig. 5 - 1 and a see - saw shutter release lever #202 inside.

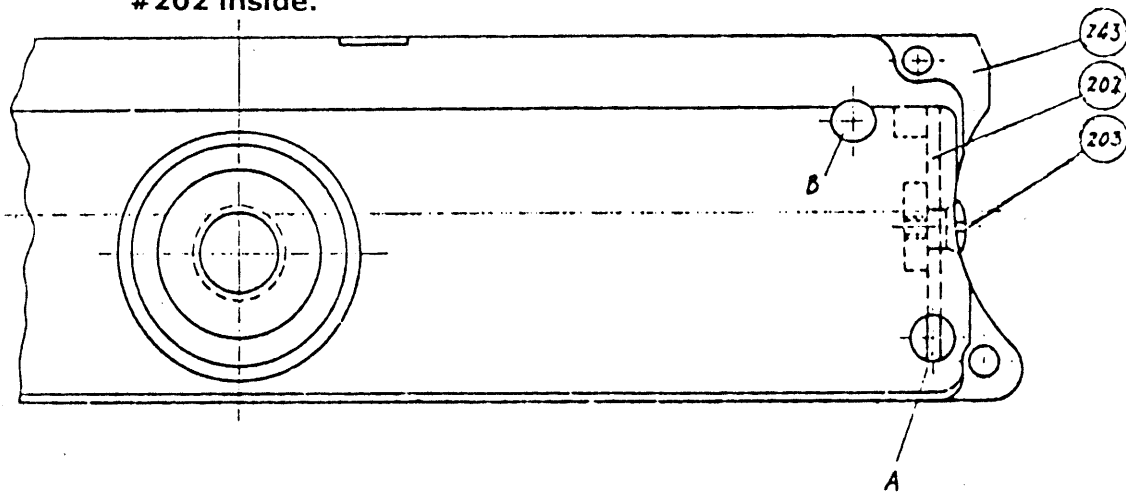


Fig. 5 - 1

(2) Replacing the Q- Assembly

- a. Unscrew 4 attaching screws and remove the bottom plate.
- b. attach the correct bottom plate #243 with the 4 screws, so that the end of the see-saw lever #202 comes inside of the shutter spring plate in the camera. (setting the A-R ring on the camera top to R will facilitate the work)
- c. Wind up the shutter. Then, if the shutter is released by means of a narrow bar inserted through the hole A in the bottom plate, the replacement is completed.

(3) Attach the Motor drive to the camera

Too much vertical play between the Motor Drive and the camera will cause incorrect operation. To reduce the play, bend the part D of #157 and E of #292 as shown in Fig. 5 - 2.

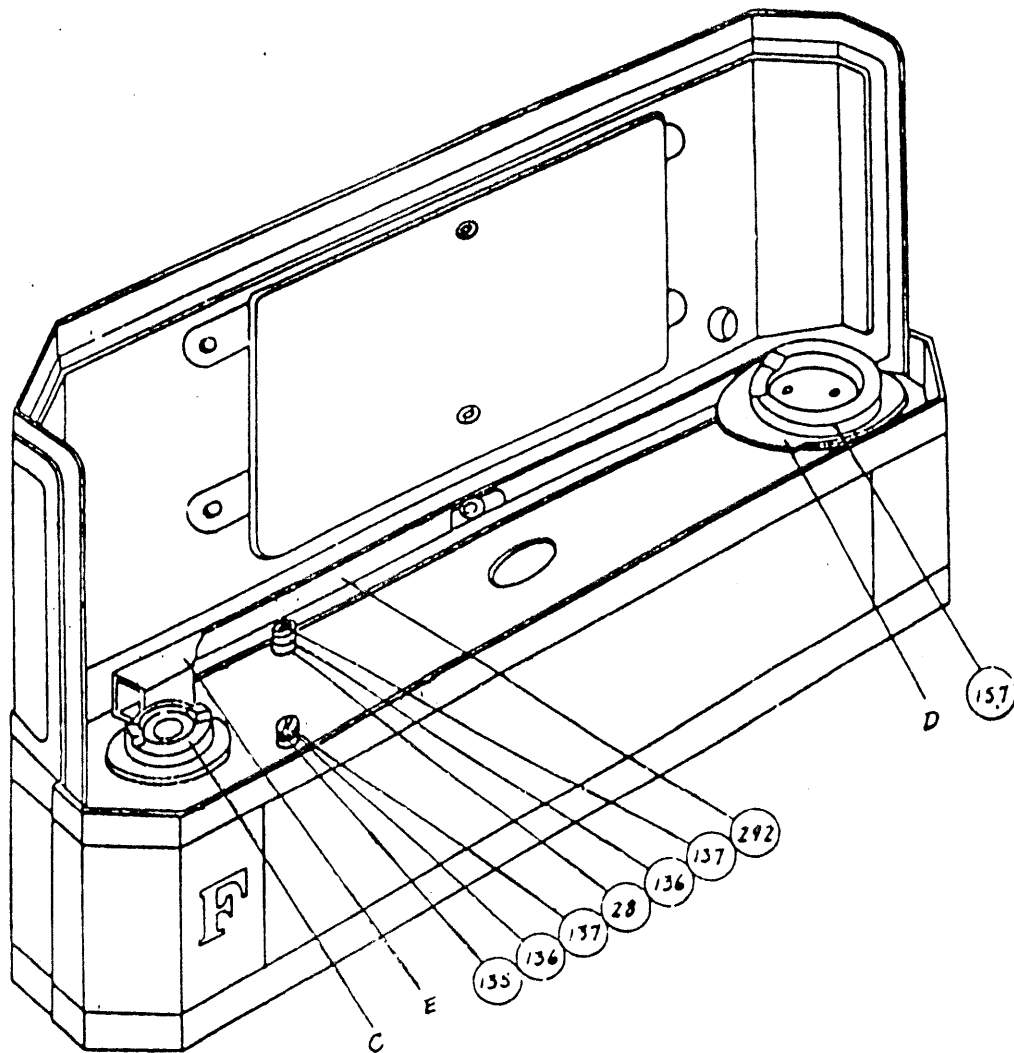


Fig. 5 - 2

(4) Adjustment of shutter releasing spindle #135

Remove washer #137 at the end of shutter release spindle #135. Lower the position of screw #136. Attach the Motor Drive and operate the shutter. If in this position the shutter is not released, raise the the screw #136 gradually up to the position where the shutter can be released positively.

Choose washer #137 (of 0.3, 0.5 and 0.7mm thick are prepared) corresponding to the height of the screw determined above and insert it between the screw #136 and release spindle #135. Fasten the screw #136.

(5) Adjustment of spindle #28 in the A-R safety mechanism

Push down the spindle #28 on the Motor Drive, detached from the camera, with the finger, Set the C-S ring to S and depress the button. If a clattering sound is heard and no rotation of the exposure counter takes place, the A-R safety mechanism of the Motor Drive itself is all right.

If no sound is heard and rotation of the counter occurs, remove the A-Assembly and check the operation of lever #57 in the C-Assembly in the following way :

By pushing the p spindle # 28, the plate spring #56 should be raised and the lever #57 rotated by the spring #58, by which the rotation of the winding up coupling spindle should be hindered by the end of the lever #57.

Then, proceed to the same checking of the Motor Drive this time installed on camera with the A-R ring set a R and the C-S ring on the Motor Drive being set at C. If the correct operation as described above is not obtained, adjust the height of the screw #136 at the end of the spindle #28 as described in Paragraph (1).

~2. Checking Items

- (1) Permissible vertical play between the Motor Drive and the camera.
- (2) Dependable operation of every part and of every button, as well as click-stop action on the Motor Drive.
- (3) Correct operation of the single and consecutive exposures.
- (4) Positive remote control from the battery case for single and consecutive exposures.
- (5) Zero return of the exposure counter at the same time with stop of operation in the cases (3) and (4).
- (6) Correct operation of the A-R safety mechanism.